

DELL INC

# Configuring DDPA for Single Sign On (with Fingerprint)

---

## Quick Guide

1/30/2012

This document will guide you thru the steps for configuring Single Sign On authentication using your fingerprint enrollment via Dell Data Protection | Access.

## Configuring fingerprint enrollment for *Single Sign ON Authentication*

With so many levels of authentication, the most logical way of authenticating into a system is by using *Single Sign ON (SSO)*. SSO is a one stop approach for providing credentials so you can log into your system without wasting time or without having to remember many passwords for multiple levels of authentication. DDPA allows you to configure your system to authenticate only at Pre-Boot Authentication (PBA or as we call it Pre-Windows Login) while at under the covers, it is really authenticating to both (PBA and Windows) by combining credentials, so you don't have to logon more than once. Our Dell system BIOS works together with DDPA to make this happen.

In the example below, we will configure the system to allow you to just swipe your fingerprint during boot, without any more user interaction.

If security devices such as fingerprint and/or smartcards readers were purchased with your Dell system, the system will already be pre-configured with DDPA installed.

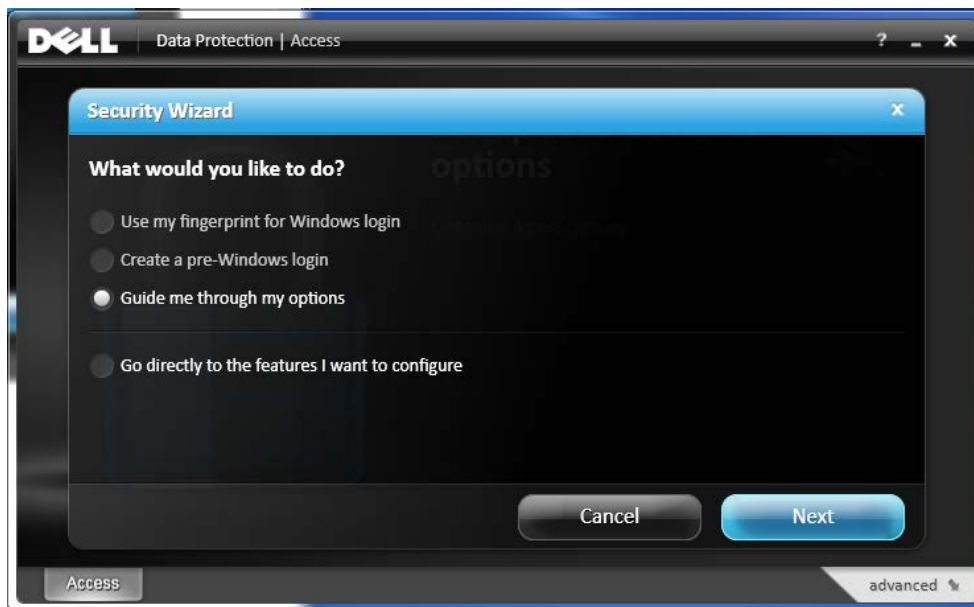
- 1- The first thing to remember when enrolling credentials is to be logged on to your network as you normally do. If you use a Domain as in most network environments, you are already using your default user ID and certificate propagations such as in PKI network environments will take effect along with enrollments.
- 2- While on your desktop environment, click on Programs/ Dell/ Dell Data Protection/ Access/ Access (you can right-click on *Access* and select to *send to desktop shortcut* to make the application more accessible the next time).
- 3- If this is the first time you use DDPA, a wizard will launch automatically; if not, click on the blue magic wand on the right upper corner of the window below.



- 4- Click **Start** on the “Security Wizard” screen.

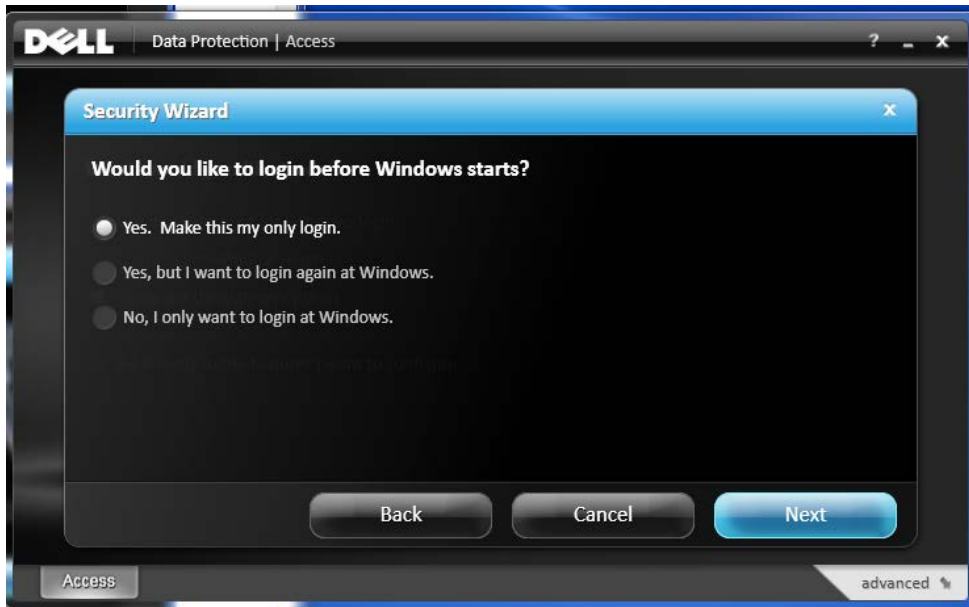


- 5- On “What would you like to do?”, select “Guide me through my options” and click **Next**.



- 6- Click **Next** on the “Login guide” screen.

- 7- On “Would you like to login before Windows starts”, select “Yes. Make this my only login” and click **Next**.



- 8- Select “**Fingerprint Only**” from drop down as the method to login and click **Next**.



- 9- Click **Next** on the “Fingerprint Management” screen.

- 10- On “Verify your Identity”, enter your Windows password and click **Next** (Note: If Pre-Windows login was already enabled, a new screen will appear asking you for the Pre-Windows login password as well).

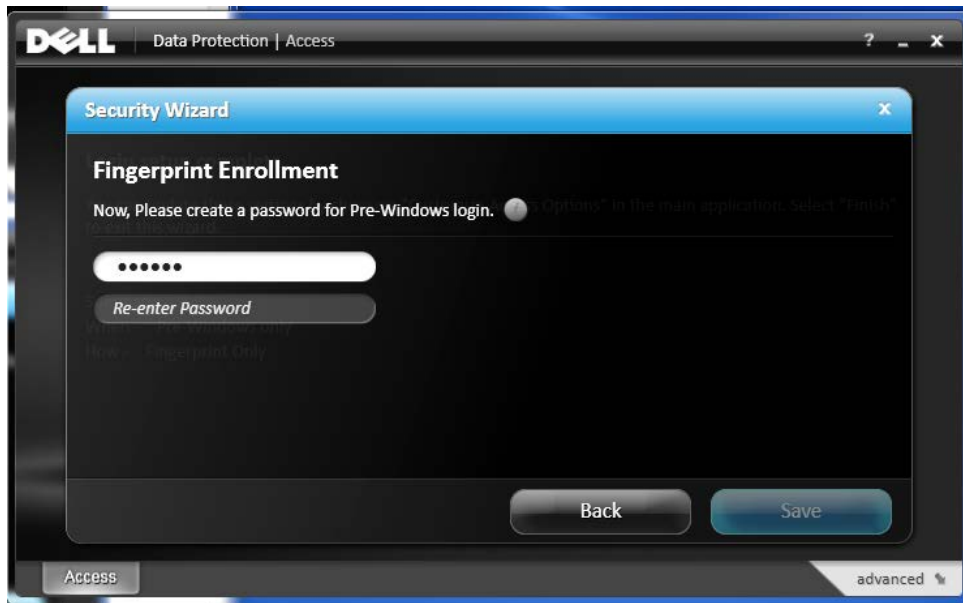
11- The “Fingerprint Management” screen below appears. Click on the finger you want to enroll and swipe your finger at least 4 times until enrollment is completed, as in the slide on step 12.



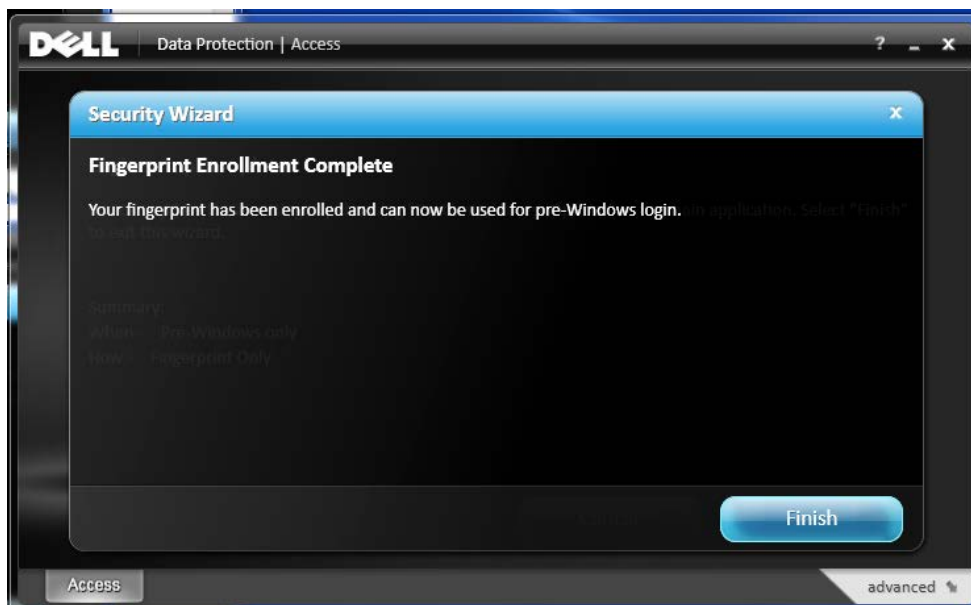
12- Click **Next** when completed.



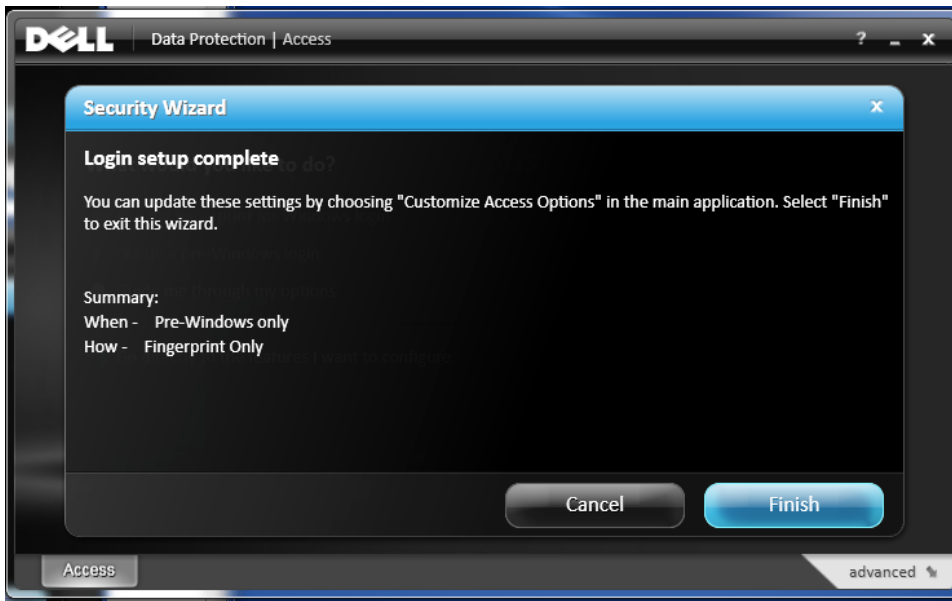
13- If pre-Windows login was not set, you would be asked to create a Pre-Windows login password at this point. Create one and click **Save** when complete.



14- On "Fingerprint Enrollment Complete", click **Finish**.



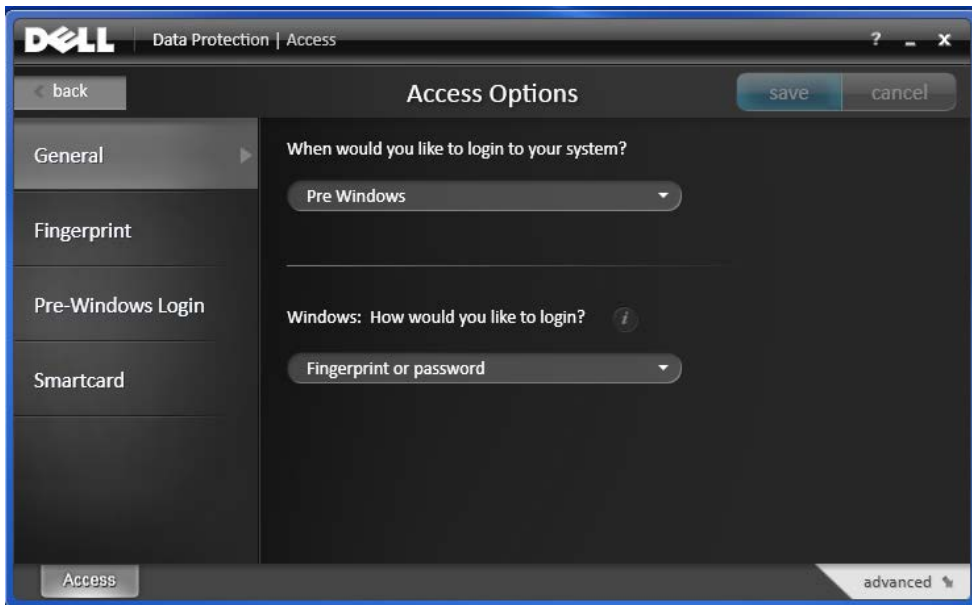
15- The “Login setup complete” screen below appears. Confirm your settings and click **Finish**.



16- You are now set for Single Sign On. Your access option (Fingerprint) is now displayed on DDPA home screen, as well as the Pre-Windows Login.



17- To confirm your configuration, click on **“Customize Access options”** link and select the **“General”** tab.



18- Reboot the system and make sure everything runs smoothly. Remember to only use the finger enrolled when asked during pre-Windows to swipe your fingerprint. After swiping your finger, the system should continue straight into the Windows desktop without stopping to login again.